

TRUCK, UTILITY, 1/4 TON, GS, LANDROVER

HYDRAULIC MASTER CYLINDER PUSHRODS

MODIFICATION INSTRUCTION

REFERENCE: - AC in WM No 2227/3.

NOTE: - This instruction supersedes previous issues, all copies of which will be destroyed. There is no significant change.

SUMMARY

1. This instruction details the method of overcoming the defective locknuts on both brake and clutch master cylinder pushrods on either side of the pedal trunnion, which are coming loose and throwing the pedal out of adjustment.

Estimated manhours to perform: 2.0

2. **Priority:** Group 2

3. **Vehicles affected:**

All subject vehicles

4. **Items affected:**

2520-66-010-7593 Master cylinder assy clutch
2530-66-010-7557 Master cylinder assy brake

5. **Action required:** By RAEME authorised to carry out unit work or repair in accordance with WKSP A 850.

6. **Stores required:** Available through normal channels.

Stock No	Designation	Qty
5310-99-941-8386	5/16 Washer, plain, steel, precision, zinc coated	4
9515-66-011-9623	3/4 in w x 3/16 in thk steel strip, carbon hot rolled	9 in
NIV	1/2 in x 1/8 in steel strip, mild steel	2 1/8 in

DETAIL

7. Manufacture special tools as per fig 1 and 2.

Brake Pushrod

8. (a) Remove cover plate from pedal trunnion housing.
- (b) Attach a bleed tube to one front wheel bleed nipple and the other end into a container of brake fluid, slacken off nipple.
- (c) Ensure that the brake fluid reservoir is full and kept topped up throughout the operation.
- (d) With an assistant depressing the brake pedal to the floor, remove the outer nut from the master cylinder pushrod.
- (e) Attach the fulcrum piece across the top of the housing between the two centre holes, using the cover screws.
- (f) Insert the fork of the lever over the pushrod into the master cylinder, remove the trunnion and fit a washer.
- (g) Fit the pedal trunnion back onto the pushrod, and while an assistant depresses the pedal to the floor, fit the outer washer and nut.

- (h) Tighten the wheel bleed nipple, check for sponginess and bleed if necessary.
- (j) Adjust locknuts to give 1/16 in free play at pushrod, and tighten.

Clutch Pushrod

9. (a) Proceed as for the brake pushrod, except that as the bleed nipple on the clutch slave cylinder is *NOT* readily accessible it will be necessary to slacken the pressure line at the master cylinder.
- (b) Note that the clutch reservoir is a separate reservoir inside the brake reservoir, if this is kept topped up and the pressure line tightened with the pedal depressed, air should not enter the system.

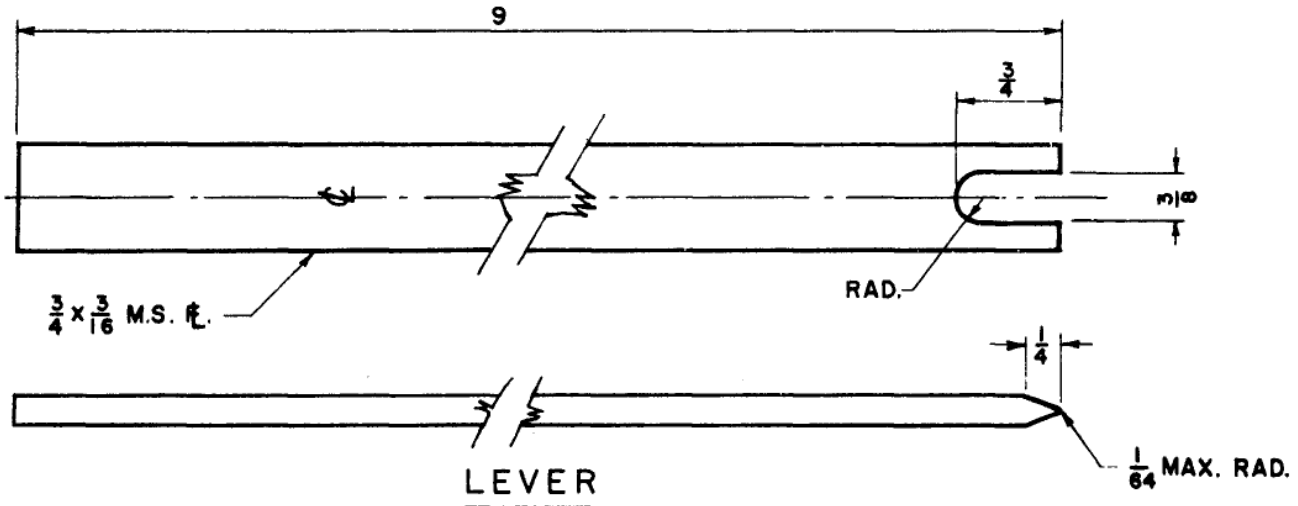
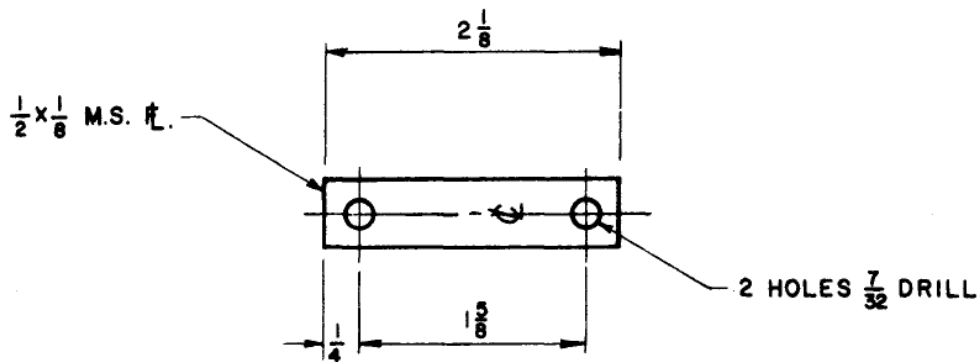


FIG 1 - LEVER



FULCRUM PIECE

FIG 2 - FULCRUM

E N D